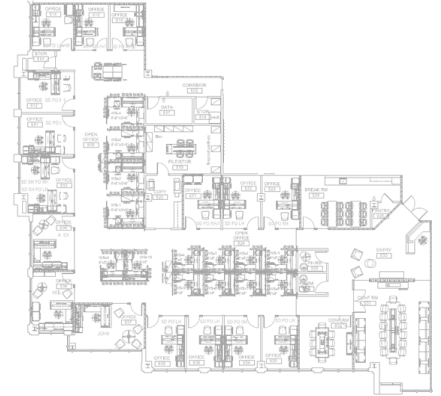




PROJECT DETAILS:

- Investment Service Provider
- Origin Site: 4,700 SF
- Destination Site: 8,500 SF
- 32 Full-time Employees
- Timeframe: October 2019 - December 2019



PROJECT SCOPE:

- Construction Participation
- Technology Integration Support
- Furniture Installation
- Move Services & Management
- Vending Equipment Relocation
- Copier Relocation
- Signage Installation
- Decommissioning
- Furniture Donation And Disposition



PROJECT HIGHLIGHTS:

Nearing the completion of their self-run project, the client reached out for support during the final months of execution to ensure everything came together smoothly. During our kickoff we immediately uncovering some severe schedule concerns that were overlooked. The project team worked closely with the vendors involved to ensure all activities and deliveries were expedited in order to meet the client's hard deadline. The fast paced few weeks of execution and collaborative environment created made it possible to accomplish the client's timeline.