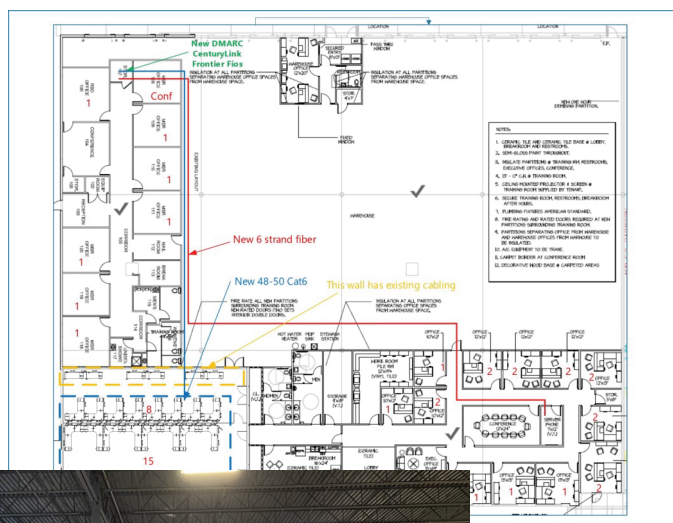


## PROJECT DETAILS:

- Government Contractor
- Origin Site: 100,000 SF
- Destination Site: 35,000 SF
- Destination Site: 20,000 SF
- Timeframe: November 2019 - February 2020

## PROJECT SCOPE:

- Design & Construction Management
- Technology Integration
- Furniture Reconfiguration
- Racking Relocation
- Move Services & Management
- Office Services Setup
- Decommissioning



## PROJECT HIGHLIGHTS:

Given the limited timeline available for the client to vacate their current space, detailed coordination of the many activities occurring simultaneously was critical to the success of this project. The internal reconfiguration of their current facility, the subsequent partial move to a second facility and the construction efforts along the way in both locations each presented their own unique challenges. The project team worked effectively against the clock and met every schedule requirement the client demanded.

## CLIENT TESTIMONIAL:

“ [Relofant] led our move from a 100,000 SF classified facility in to two smaller facilities. They were very helpful in coordinating the physical relocation of our employees, infrastructure establishment and decommissioning of our facility.

*I would absolutely recommend them.* ”

- SVP of Business Development